

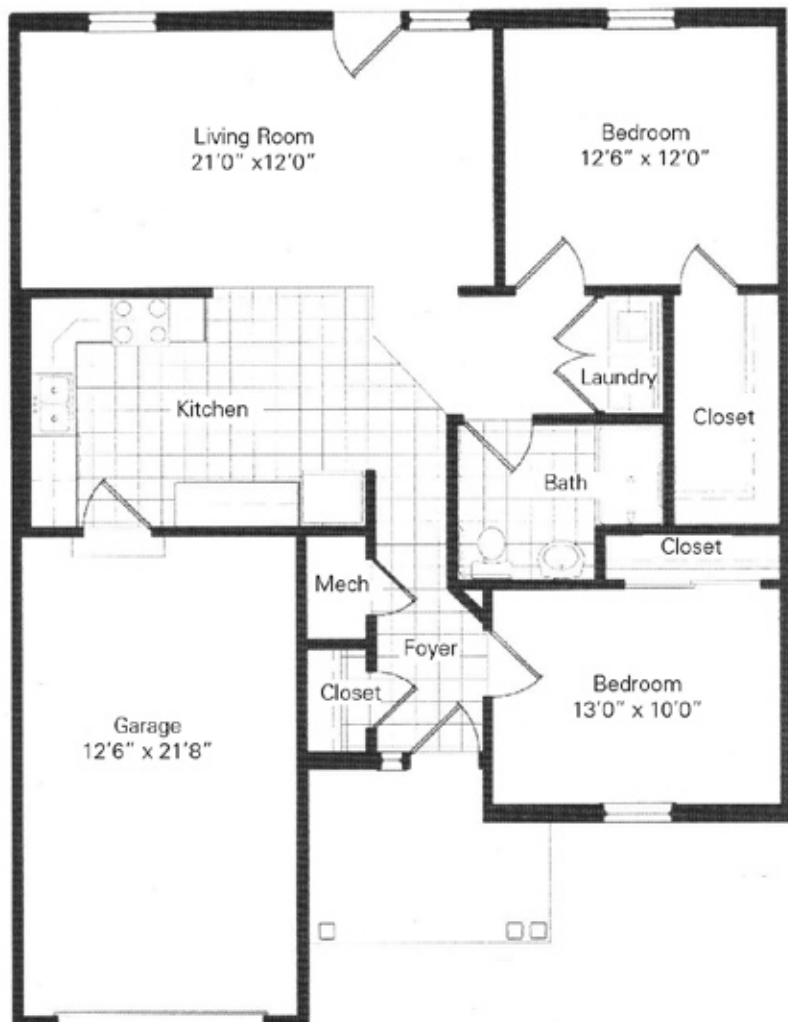


**MERIDIAN VILLAGE**  
LUTHERAN SENIOR SERVICES

## The Stratford

### A Patio Home

- Large open floor plan
- Full-size laundry
- Master bedroom with oversize closet





**MERIDIAN VILLAGE**  
LUTHERAN SENIOR SERVICES

## Patio Homes

### Amenities and Services

---

There's so much to see and do at Meridian Village. We offer a full spectrum of amenities and services to help you live life to the fullest.

#### Patio Home Amenities

Fully equipped kitchen with refrigerator, stove, dishwasher, and garbage disposal

Washer and dryer

Patio or Sunroom

Private garage

Bathrooms with safety features

Insulated thermal windows with miniblinds

Individual temperature control

Landscaping, maintenance, and service for provided appliances

#### Patio Home Services

Restaurant-style dining with one meal per day included\*

Light housekeeping twice a month, with additional housekeeping priced on an a la carte basis

Biannual deep cleaning

Paid utilities (except phone)

Local TV channels included (Additional television packages available)

24-hour emergency system and fire safety features

Priority status for Care Center and Assisted Living

#### Community Services

Two fitness centers, large heated indoor pool and whirlpool tub

Scheduled transportation

Media room / theater

Billiard room

Library, reading room and computer / Internet center

Chapel

Local banking services

Private dining room, Club Room and Bistro Room

Garden room

Beauty / Barber shop

*\*Alternate plan with 10 meals monthly available.*